

### Where can I get a real picture of earth (no composite, CGI or painting)?



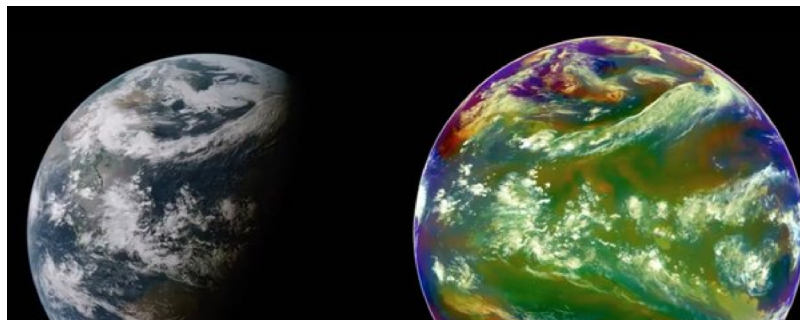
**Michael Brenner**

Studied Mechanical Engineering & Comparative Linguistics at Vienna University of Technology · 1y

You can't, cuz there aren't any, cuz nobody went far enough to get any. It is often claimed as a final "gotcha" that the Japanese Himawari satellite takes full live images of earth every ten minutes



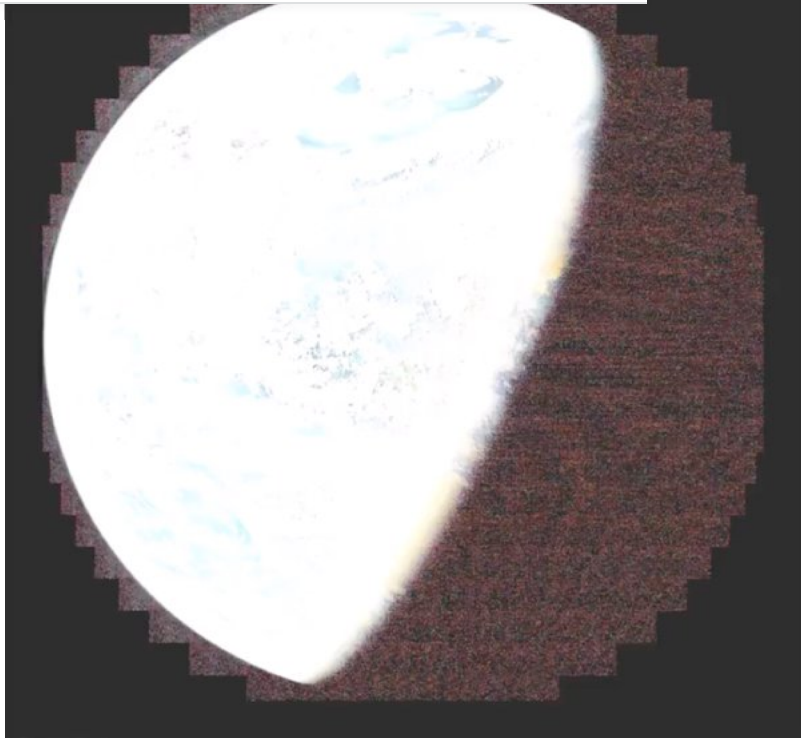
.... well, let's see how that works out:



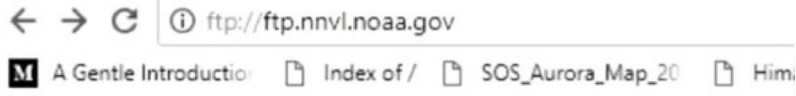
Upvote · 13    34    1



This is weather data superimposed over the fake blue marble image and the "dark side of earth" is added:



Believers in these scams are just too lazy or too scared to get to the bottom of it, wherefore all this scamming can be done in bright day light:



## Index of /

Name	Size	Date Modified
GOES/		9/6/17, 5:35:00 AM
SOS/		9/27/17, 7:38:00 AM
SiteDescription.txt	4.9 kB	1/31/17, 4:00:00 PM
View/		2/19/17, 5:00:00 PM
lost+found/		1/31/17, 4:00:00 PM
pub/		11/27/17, 3:28:00 AM

Notes on the contents of the ftp.nnvl.noaa.gov archive

ftp://ftp.nnvl.noaa.gov/GOES/ directory:

Imagery in the GOES archive are presented as is, with no quality control beyond the initial checkout and acceptance of the original processing code. This imagery is not considered operational and as it is processed from the primary GOES ingest servers may be subject to anomalies and drop outs of data experienced during the normal course of satellite operations. Additionally, a single computer is tasked with creating these images and may be subject to outages during the course of normal daily operations.

Please credit NOAA for the use of these images.

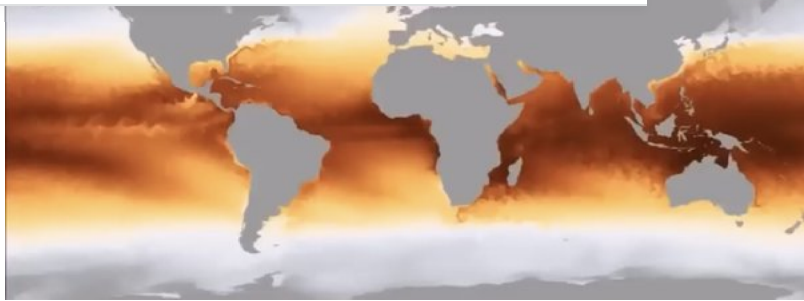
All images in the GOES archive are processed in McIDAS using GOES channel 1 visible and GOES channel 4 infrared data. The underlying colored land image is from the [NASA Blue Marble Next Generation data set](#). When using this basemap for web or other publications, please provide the following credit line: The basemap was provided by the Earth Observatory Team - NASA (<http://earthobservatory.nasa.gov>)

So it is admittedly NOT A PHOTO taken by the satellite at all, it is all computer crunching combined with actual doppler radar data and superimposed on an admittedly photoshopped image (Paul Simmons, responsible for the "sphericity" of the blue marble,

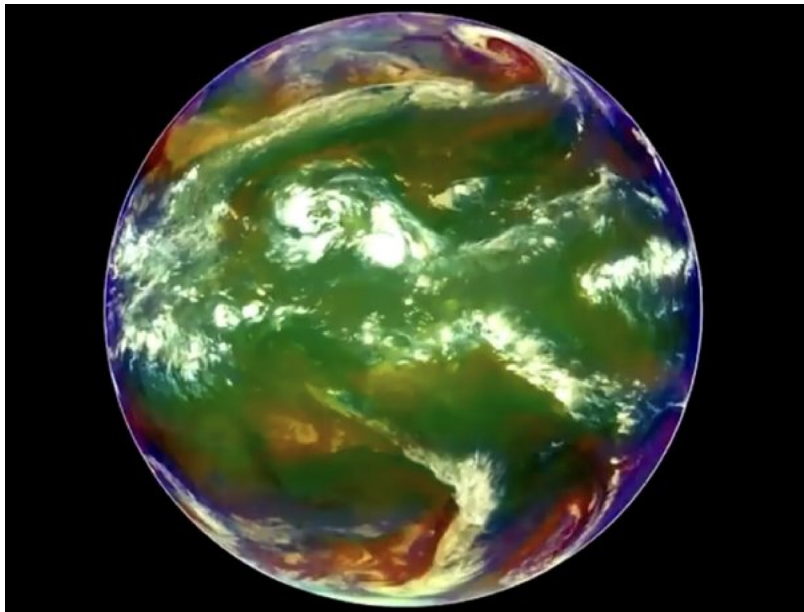
This crunching is done far into the future:

	A Gentle Introductio-	Index of /	SOS_Aurora_Map_20	Himawari
	GA85 yearly 2055 color png	1.9 MB	7/14/14, 5:00:00 PM	
	GA85 yearly 2056 color png	1.9 MB	7/14/14, 5:00:00 PM	
	GA85 yearly 2057 color png	1.8 MB	7/14/14, 5:00:00 PM	
	GA85 yearly 2058 color png	2.0 MB	7/14/14, 5:00:00 PM	
	GA85 yearly 2059 color png	1.9 MB	7/14/14, 5:00:00 PM	
	GA85 yearly 2060 color png	1.9 MB	7/14/14, 5:00:00 PM	
	GA85 yearly 2061 color png	1.9 MB	7/14/14, 5:00:00 PM	
	GA85 yearly 2062 color png	1.8 MB	7/14/14, 5:00:00 PM	
	GA85 yearly 2063 color png	1.8 MB	7/14/14, 5:00:00 PM	
	GA85 yearly 2064 color png	1.9 MB	7/14/14, 5:00:00 PM	
	GA85 yearly 2065 color png	1.9 MB	7/14/14, 5:00:00 PM	
	GA85 yearly 2066 color png	1.8 MB	7/14/14, 5:00:00 PM	
	GA85 yearly 2067 color png	1.8 MB	7/14/14, 5:00:00 PM	
	GA85 yearly 2068 color png	1.8 MB	7/14/14, 5:00:00 PM	
	GA85 yearly 2069 color png	1.8 MB	7/14/14, 5:00:00 PM	
	GA85 yearly 2070 color png	1.8 MB	7/14/14, 5:00:00 PM	
	GA85 yearly 2071 color png	1.6 MB	7/14/14, 5:00:00 PM	
	GA85 yearly 2072 color png	1.6 MB	7/14/14, 5:00:00 PM	
	GA85 yearly 2073 color png	1.6 MB	7/14/14, 5:00:00 PM	
	GA85 yearly 2074 color png	1.7 MB	7/14/14, 5:00:00 PM	
	GA85 yearly 2075 color png	1.6 MB	7/14/14, 5:00:00 PM	
	GA85 yearly 2076 color png	1.6 MB	7/14/14, 5:00:00 PM	
	GA85 yearly 2077 color png	1.6 MB	7/14/14, 5:00:00 PM	
	GA85 yearly 2078 color png	1.7 MB	7/14/14, 5:00:00 PM	
	GA85 yearly 2079 color png	1.6 MB	7/14/14, 5:00:00 PM	
	GA85 yearly 2080 color png	1.6 MB	7/14/14, 5:00:00 PM	
	GA85 yearly 2081 color png	1.7 MB	7/14/14, 5:00:00 PM	
	GA85 yearly 2082 color png	1.5 MB	7/14/14, 5:00:00 PM	
	GA85 yearly 2083 color png	1.5 MB	7/14/14, 5:00:00 PM	
	GA85 yearly 2084 color png	1.5 MB	7/14/14, 5:00:00 PM	
	GA85 yearly 2085 color png	1.5 MB	7/14/14, 5:00:00 PM	
	GA85 yearly 2086 color png	1.4 MB	7/14/14, 5:00:00 PM	
	GA85 yearly 2087 color png	1.4 MB	7/14/14, 5:00:00 PM	
	GA85 yearly 2088 color png	1.4 MB	7/14/14, 5:00:00 PM	
	GA85 yearly 2089 color png	1.3 MB	7/14/14, 5:00:00 PM	
	GA85 yearly 2090 color png	1.4 MB	7/14/14, 5:00:00 PM	
	GA85 yearly 2091 color png	1.4 MB	7/14/14, 5:00:00 PM	
	GA85 yearly 2092 color png	1.4 MB	7/14/14, 5:00:00 PM	
	GA85 yearly 2093 color png	1.3 MB	7/14/14, 5:00:00 PM	
	GA85 yearly 2094 color png	1.3 MB	7/14/14, 5:00:00 PM	
	GA85 yearly 2095 color png	1.3 MB	7/14/14, 5:00:00 PM	
	GA85 yearly 2096 color png	1.3 MB	7/14/14, 5:00:00 PM	

... and the raw material looks like this:



..... and on a specific day like this: no continents, pure weather!



... which then is admittedly superimposed over the "blue marble" and falsely presented as 10 minutes old live image from space like this:



If you have to go to that length to fake a live image from a satellite you haven't got any, none, because it is not reality, nothing of it.

Here another rather lazy "going to great length" in order to dupe you out of your wits - 6 years worth of fake "24/7" light and darkness in Antarctica:



South Pole Time Lapse Movies

Jan - Mar, 2016



Select a Time Span

- Jul - Sep 2016
- Apr - Jun 2016
- Jan - Mar 2016
- Jan - Apr 2014
- Sep - Dec 2013
- Jan - Apr 2013
- Sep - Dec 2012
- Jan - Apr 2012
- Sep - Dec 2011
- Jan - Apr 2011
- Sep - Dec 2010
- Jan - Apr 2010
- Lunar pass and aurora's on June 2, 2004

Watch them and see for yourself how the shadows jump over ten hours as well as the not edited-out timestamp, conveniently leaving out the dark hours in summer and the light hours in winter.

The final death nail for the heliocentric scam was driven in recently in Macapá, Brazil, where they have an equinox monument....



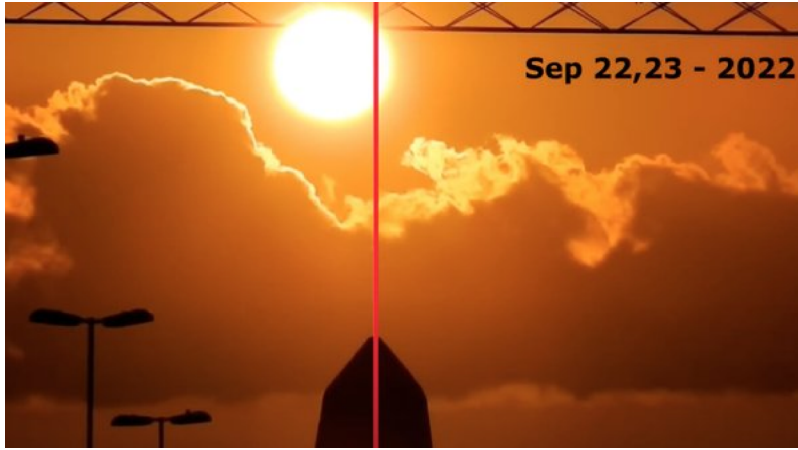
... sitting almost exactly on the equator:



According to official data like here from Stellarium, the azimuth of the sun at sunrise on September 22nd should be 89°30' and on the 23rd it should be 90°07'

	22	89°30'05,0"
	23	90°07'42,6"

nortn.....



... just as a "close Sun going in circles over a flat plane" would do!



Funny enough - or tragic, depending on your mood - globe defenders were quick to blame the architect of the monument, because the "experiment" was watched and could not be attacked, claiming that the monument was misplaced and not at the equator, but 20 miles to the north: that is first of all not true as a quick google earth search shows, and then it would exaggerate the dilemma instead of solving it... that's how confused globe believers are, starting from believing utterly impossible moon landings over likewise impossible satellites all the way to the "made up" and not observed path of the sun.

6.3K views · View 13 upvotes · View 1 share

1 of 8 answers



Add a comment...

Add comment



Shane Michaels · 1y

Can you provide any explanation as to exactly how CGI was an option in 1969? (when this photo was taken)



7 Reply ...

**Tony Emmerton** · 1y  
That image you posted is NOT a copy of an original, it is a composite of the so called original, so showing this image only proves the ignorance of those who believe the lie that this picture proves anything.

3 Reply ...

**Shane Michaels** That's a lot of typing with no actual evidence of any kind to back it up.....

**Phillip Kidd** · 1y  
Hey Michael. On flat earth the direction of sunrise in Macapa at the time of your photo should be north east. Why do you think this massive wrong is not a problem? or even worse. Throughout December the Sun is observed to rise in the south [\(more\)](#)

3 Reply ...

**Michael Brenner** · 1y  
It doesn't get more wrong than calling 89 degrees NE, and that 89 is the official number given by Stellarium and SunCalc

Reply ...

**Phillip Kidd** So calling 045 degrees required by flat earth instead of 090 in Macapa and...

**Jag Kan** · 1y  
Hello Michael, first let me thank you for all the useful information you have been giving us here, to be honest i'm so proud and amazed by everything you do on here, and i wanted to ask your permission if you may allow me to copy some [\(more\)](#)

4 Reply ...

**Michael Brenner** · 1y  
Thanks for your thumbs up, and please feel free to use all material you find useful. Encouraging people to wake up is the most important here.

7 Reply ...

**Jag Kan** I wonder if you got explanation for Lunar eclipse, because according to my...

View 7 other answers to this question >

About the Author



**Michael Brenner**

Quora



11 of 11

939K content views 9.9K this month

Active in 1 Space

Joined August 2016

Following · 564    Notify me    Ask question

